



KNIFE-GATE VALVES

L SERIES

LEVER

- It is a fast actuator.
- **A = Max. width** of the valve (without actuator).
B = Max. height of the valve (without actuator).
C = maximum length when the gate is centred.
- The actuator includes:
 - Lever.
 - Rod.
 - Guide bearing.
 - External limiting switches to maintain the position.
- Available: ND50 to ND300, other ND on request.
- The weights are approximate and vary according to the material and the valve's accessories.

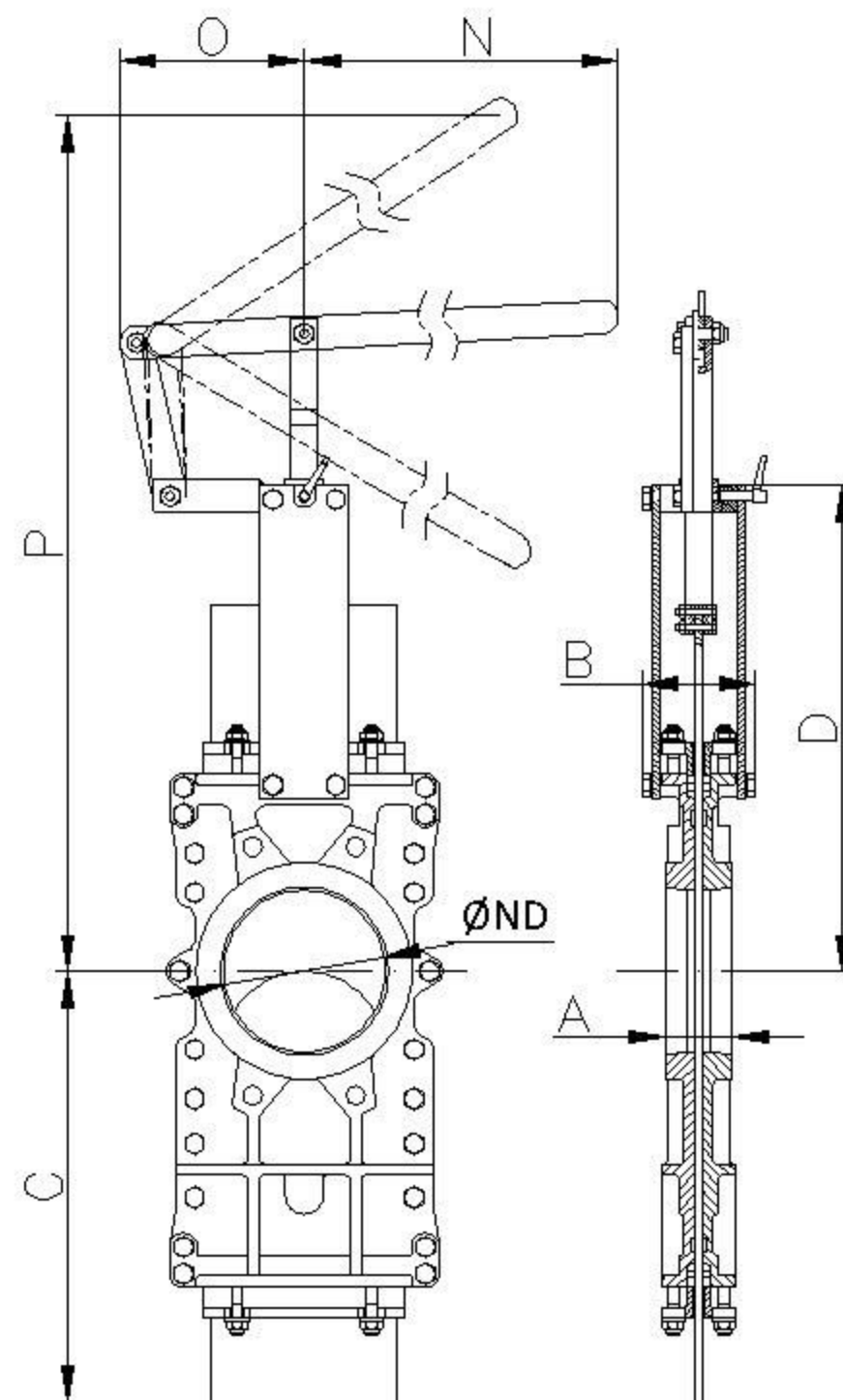


Fig. 13

ND	ΔP (Kg/cm ²)	DRAW (Nw)	A	B	C	D	N	O	P	Weight (kg.)
50	10	894	40	91	225	243	325	155	504	13
65	10	1508	40	91	265	269	325	155	526	14
80	10	2281	50	91	310	293	325	155	549	18
100	10	3561	50	91	370	334	325	155	605	20
125	10	5565	50	101	430	367	425	155	902	29
150	10	6419	60	101	495	419	425	155	956	39
200	8	10020	60	118	630	525	620	290	1027	55
250	6	11230	70	118	770	620	620	290	1416	89
300	6	16210	70	118	895	704	620	290	1525	113

table 6